

NAME

KEY

CWW/A1.8 – The Marshall Plan (page 1 of 4)

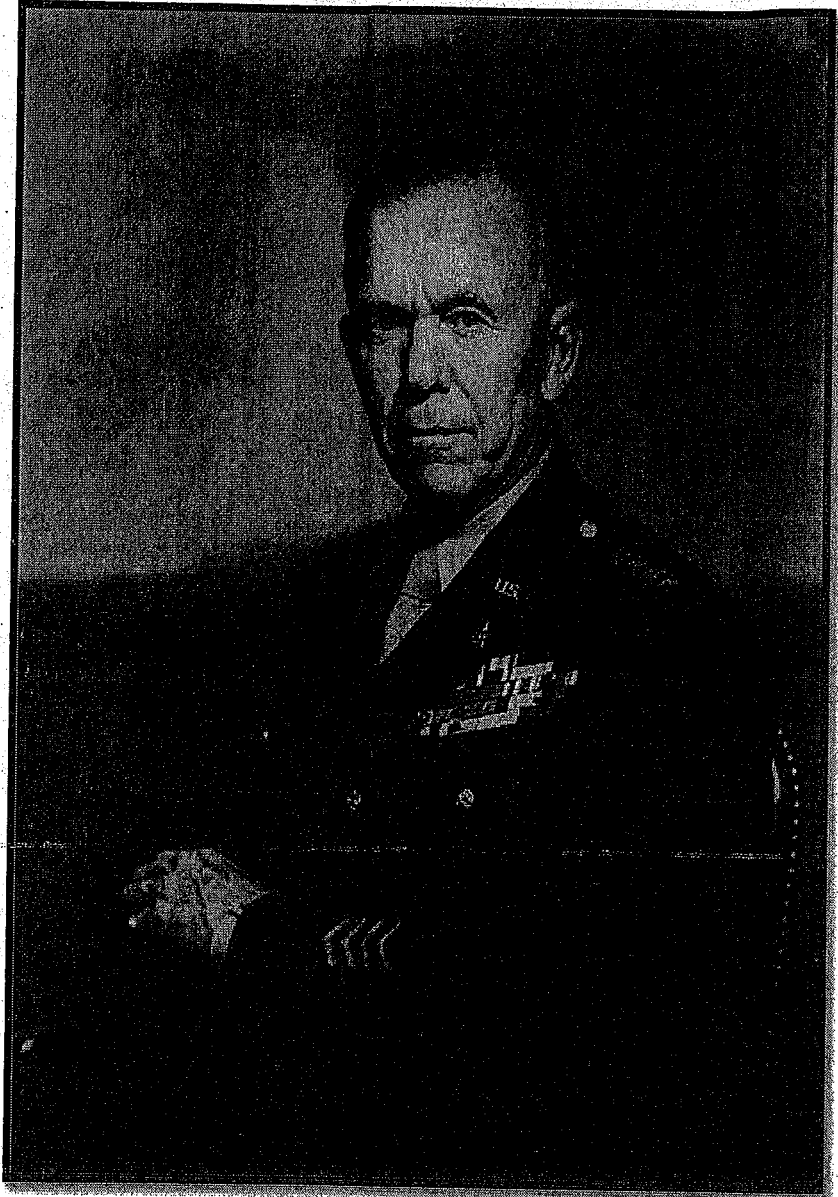
Directions: The following text is taken from a speech given by US Secretary of State George Marshall's "European Initiative Essential to Economic Recovery," given at Harvard University's commencement address in 1947. In the years following WWII, European countries struggled to recover from the war's devastation. Cities, businesses, and homes were destroyed and there were shortages of food and material resources.

Read the excerpt carefully, stopping to discuss at the end of each paragraph as detailed in the table on the next two pages.

After reading Marshall's remarks, take a look at the Herblock cartoon on page three.

Finally, answer the following questions in 150 words or less:

- Why does Marshall believe the US must help Europe?
- The Soviet Union refused to participate in the Marshall Plan. Why do you think Stalin opposed it?



[Gen. George Catlett Marshall, 1880-1959, half-length portrait, seated, facing left], March, 1944. Source: Library of Congress, <http://www.loc.gov/pictures/item/2005680095/>

CWW/A1.8 – The Marshall Plan (page 3 of 4)

Excerpt	Questions for Discussion
<p>It is logical that the United States should do whatever it is able to do to assist in the return of normal economic health in the world, without which there can be no political stability and no assured peace. Our policy is directed not against any country or doctrine but against hunger, poverty, desperation, and chaos. Its purpose should be the revival of a working economy in the world so as to permit the emergence of political and social conditions in which free institutions can exist. Such assistance, I am convinced, must not be on a piecemeal basis as various crises develop. Any assistance that this Government may render in the future should provide a cure rather than mere palliative. Any government that is willing to assist in the task of recovery will find full cooperation, I am sure, on the part of the United States Government. Any government which maneuvers to block the recovery of other countries cannot expect help from us. Furthermore, governments, political parties, or groups which seek to perpetuate human misery in order to profit therefrom politically or otherwise will encounter the opposition of the United States.</p>	<ol style="list-style-type: none"> 1 • Why is it "logical," as Marshall argues, to help Europe's economy? 2 • The word palliative usually refers to medicine – a palliative helps a patient deal with the symptoms of a disease, but it doesn't cure it. Given that, what do you think Marshall means when he says, "Any assistance that this Government may render in the future should provide a cure rather than mere palliative?" 3 • What behavior would "encounter the opposition of the United States?" Who do you think Marshall is referring to? <p>1. Logical Plan = Created Need For Political Stability + Peace</p> <p>2. A palliative helps patient deal with symptoms of Disease So the assistance should be enough to solve problem Need Long Term Solution</p> <p>3. Any Nation (USSR) seeking to Perpetuate or Extend Misery</p>
<p>It would be neither fitting nor efficacious for this government to undertake to draw up unilaterally a program designed to place Europe on its feet economically. This is the business of the Europeans. The initiative, I think, must come from the Europeans. The role of this country should consist of friendly aid in the drafting of a European program and of later support of such a program so far as it may be practical for us to do so. The program should be a joint one, agreed to by a number, if not all, European nations.</p>	<p>4 Should the US do this alone, according to Marshall? Explain.</p> <p>The Program Should involve other European Nations</p>

CWW/A1.8 – The Marshall Plan (page 4 of 4)



Questions for Discussion:

- What symbols are found in the political cartoon? What do they mean?
- What is the overall message of the cartoon?
- Do you think Block represented the U.S. or Soviet point of view? Why do you think that?
- Do you think Block favors the Marshall Plan? Use evidence from the cartoon to support your answer.

This cartoon, "It's the same without mechanical problems" was drawn by Herbert Block and published in the Washington Post on Jan. 26th, 1949. Used by permission from the Herbert Block Foundation.

Source: Library of Congress, <http://www.loc.gov/pictures/item/00652193/>

- ① Stalin, Tractor, Plow, Hammer + Sickle Symbol, Sign, Military
- ② US Point of View
- ③ Favor Marshall Plan, Modern vs Old Capitalism vs Communism